

# Rochester MicroSystems, Inc.

## Electronic Design Services

Outsourcing Solutions For Hardware & Software Development

### Why Choose RMI As Your Design Partner?

#### ENGINEERING BRAINPOWER

It is the depth and breadth of our engineering talent which makes us unique and allows us to provide you with creative solutions to your engineering challenges. We've put together a staff of seasoned, innovative engineers whose electronic design expertise covers a broad spectrum of technologies and industries. From FPGA logic to Ethernet interfaces, from aerospace to biomedical analysis, our unique cross-functional problem-solving approach keeps our clients coming back for more.

#### DEPTH

- DSP Circuit Design
- FPGA Development
- Programmable Logic
- Software And Firmware
- Analog And Digital Circuits
- Design For Harsh Environments
- PCB Layout And Testing
- Turnkey Solutions
- Rapid Prototypes
- Microcontrollers
- USB/Ethernet
- Consulting

#### BREADTH

- Digital Imaging
- Data Acquisition
- Aerospace/Military
- Consumer Electronics
- Medical Instrumentation
- Telecommunications Equipment
- Astronomical Instruments
- Industrial Manufacturing
- Inventory Control
- Test Equipment
- Semiconductor
- Construction

#### FAST TURNAROUND

Our clients have discovered that we can often turn around an electronic design in less time than it takes for them to develop an internal quote for the same job! Our established team dynamics eliminate awkward starts and stops and keep your project running smoothly.

#### RELIABILITY

Since 1994, we've built a satisfied client base of start-ups, Fortune 500 corporations and research institutions. Our established integrity will allow you to make well-informed and comfortable decisions about fulfilling your electronic design needs.

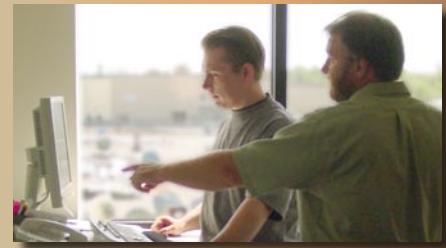
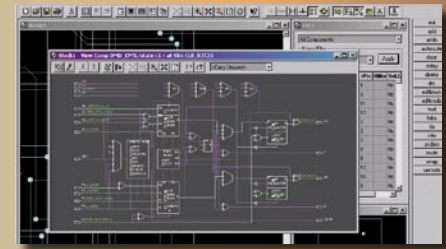
#### FLEXIBILITY

We can provide you with a complete turnkey solution or with any single piece of the design puzzle. When your requirements change, we can quickly refocus and regroup our resources to meet your needs. As part of your team, we understand your need to protect your intellectual property.

#### AN INVESTMENT THAT PAYS OFF

Outsourcing your non-core functions can reduce your overhead and free up valuable resources for core projects. If you're in immediate need of critical mass resources, we'll hit the ground running with the specialized skills you require, without additional investment in recruiting, manpower, training or benefits.

**Rochester MicroSystems, Inc.** • 90 Air Park Drive, Suite 300 • Rochester, NY 14624  
Tel: 585-328-5850 • Fax: 585-328-1144 • E-Mail: [info@rochestermicro.com](mailto:info@rochestermicro.com) • [www.rochestermicro.com](http://www.rochestermicro.com)



In simple terms,  
we can get you  
there ...faster,  
better, cheaper!  
Contact us today!



## Electronic Design Services

### DSP Circuit Design & Software Development

Our DSP design experience includes electronics, algorithm and firmware development. Recent projects include micromirror control, blood analyzer image processing, medical and optical analysis instruments, a secure time stamp system, high speed data generation, digital imaging and more.

### FPGA Logic Development

We have extensive experience with programmable logic development, simulation and verification. We've worked with components from Altera, Xilinx, Actel, Lattice, Philips and many others.

### Microcontrollers

We can provide systems that range from a single controller to systems that incorporate many microcontrollers and/or master/slave microprocessors.

### Design For Harsh Environments

We've worked on designs to withstand vibration, a wide thermal range, explosions, high EMI, radiation and ESD. We also have experience with conductive cooling and thermal management issues.

### Firmware / Software

We can provide the software for controlling embedded processors in the systems we design. We can also assist with software for systems designed by others.

### Analog & Digital Circuit Design

We design analog and digital circuits, high speed or low power. Utilizing programmable logic and microprocessors where appropriate, we generate solutions that are flexible and low cost.

### PCB Layout & Test

We provide board layouts that complement the circuit design and integrate well into your system.

### Rapid Prototypes

We assemble prototypes of the systems we design and test them to verify their performance. Working closely with our clients, we integrate the electronics and embedded software we have designed into their system.

### Turnkey Solutions

We can provide you with complete turnkey solutions involving mechanical, optical, software (e.g., embedded microcontroller, DSP programming, PLC, PC applications) and control system integration.

#### Quick Facts About RMI

Location: Rochester, NY  
Year Founded: 1994  
Employees: 26  
President: Mark A. Corio  
Ownership: Private

#### Partial RMI Client List

Hewlett Packard	General Electric
Sun Microsystems	Harley Davidson
Analog Devices	Eastman Kodak Company
US Navy	Ortho-Clinical Diagnostics
Corning	(formerly Johnson & Johnson)

